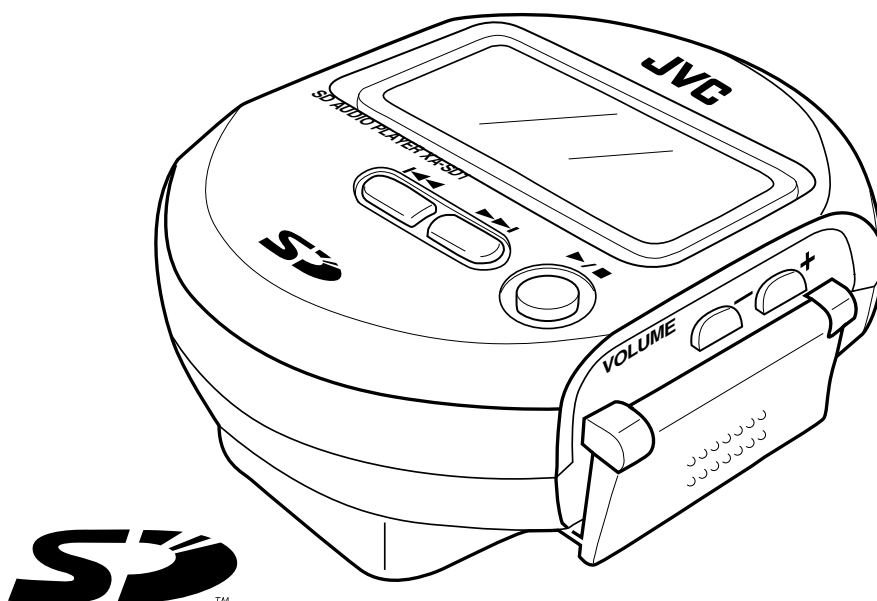


JVC

SERVICE MANUAL

SD AUDIO PLAYER

XA-SD1



Area Suffix

J ----- U.S.A.

- All parts except the chassis are replaced by unit component. (The block, circuit and board diagrams are not described in this service manual.)

Contents

Safety precautions	1-2
Disassembly method	1-3
Troubleshooting	1-5
Flowchart	1-6

Safety Precautions

1. This design of this product contains special hardware and many circuits and components specially for safety purposes. For continued protection, no changes should be made to the original design unless authorized in writing by the manufacturer. Replacement parts must be identical to those used in the original circuits. Services should be performed by qualified personnel only.
2. Alterations of the design or circuitry of the product should not be made. Any design alterations of the product should not be made. Any design alterations or additions will void the manufacturer's warranty and will further relieve the manufacture of responsibility for personal injury or property damage resulting therefrom.
3. Many electrical and mechanical parts in the products have special safety-related characteristics. These characteristics are often not evident from visual inspection nor can the protection afforded by them necessarily be obtained by using replacement components rated for higher voltage, wattage, etc. Replacement parts which have these special safety characteristics are identified in the Parts List of Service Manual. Electrical components having such features are identified by shading on the schematics and by (\triangle) on the Parts List in the Service Manual. The use of a substitute replacement which does not have the same safety characteristics as the recommended replacement parts shown in the Parts List of Service Manual may create shock, fire, or other hazards.
4. The leads in the products are routed and dressed with ties, clamps, tubings, barriers and the like to be separated from live parts, high temperature parts, moving parts and/or sharp edges for the prevention of electric shock and fire hazard. When service is required, the original lead routing and dress should be observed, and it should be confirmed that they have been returned to normal, after re-assembling.
5. Leakage current check (Electrical shock hazard testing)

After re-assembling the product, always perform an isolation check on the exposed metal parts of the product (antenna terminals, knobs, metal cabinet, screw heads, headphone jack, control shafts, etc.) to be sure the product is safe to operate without danger of electrical shock.

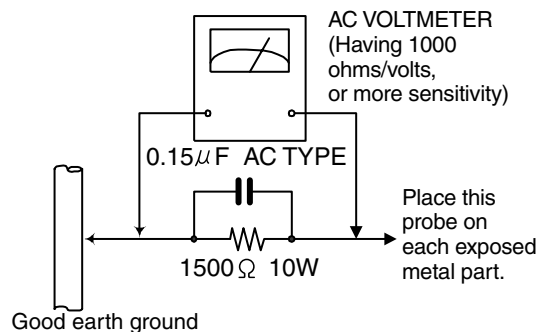
Do not use a line isolation transformer during this check.

- Plug the AC line cord directly into the AC outlet. Using a "Leakage Current Tester", measure the leakage current from each exposed metal parts of the cabinet, particularly any exposed metal part having a return path to the chassis, to a known good earth ground. Any leakage current must not exceed 0.5mA AC (r.m.s.).

- Alternate check method

Plug the AC line cord directly into the AC outlet. Use an AC voltmeter having, 1,000 ohms per volt or more sensitivity in the following manner. Connect a $1,500\ \Omega$ 10W resistor paralleled by a $0.15\ \mu\text{F}$ AC-type capacitor between an exposed metal part and a known good earth ground. Measure the AC voltage across the resistor with the AC voltmeter.

Move the resistor connection to each exposed metal part, particularly any exposed metal part having a return path to the chassis, and measure the AC voltage across the resistor. Now, reverse the plug in the AC outlet and repeat each measurement. Voltage measured any must not exceed 0.75 V AC (r.m.s.). This corresponds to 0.5 mA AC (r.m.s.).



Warning

1. This equipment has been designed and manufactured to meet international safety standards.
2. It is the legal responsibility of the repairer to ensure that these safety standards are maintained.
3. Repairs must be made in accordance with the relevant safety standards.
4. It is essential that safety critical components are replaced by approved parts.
5. If mains voltage selector is provided, check setting for local voltage.

CAUTION

Burrs formed during molding may be left over on some parts of the chassis. Therefore, pay attention to such burrs in the case of preforming repair of this system.

In regard with component parts appearing on the silk-screen printed side (parts side) of the PWB diagrams, the parts that are printed over with black such as the resistor (\blacksquare), diode (\blacksquare) and ICP (\bullet) or identified by the " \triangle " mark nearby are critical for safety.

When replacing them, be sure to use the parts of the same type and rating as specified by the manufacturer. (Except the J and C version)

Disassembly method

■ Removing the metallic cover (Fig. 1)

1. Remove four screws A retaining the metallic cover from the bottom of the unit.

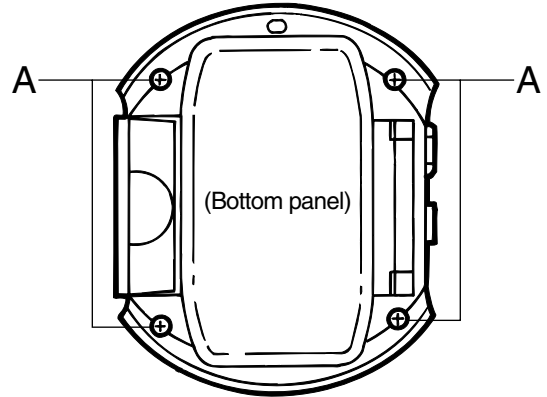


Fig.1

■ Removing the main board ass'y (Figs. 2 to 4)

- Remove the metallic cover before proceeding to the following.

1. Remove the headphone cover from the left side panel.
2. Remove screw B attaching the mode switch lever from the left side panel, and then remove the mode switch lever.
3. Remove two screws C retaining the main board from the top of the unit.
4. Expand engagement a between the VOLUME switch and right side panel outward and take out the unit. The switch lever on the left side of the Main Board will come out at this time.
5. Remove solder from the two wire soldering positions on the main board ass'y.

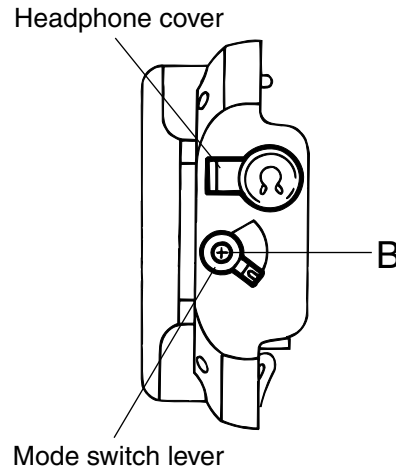


Fig.2

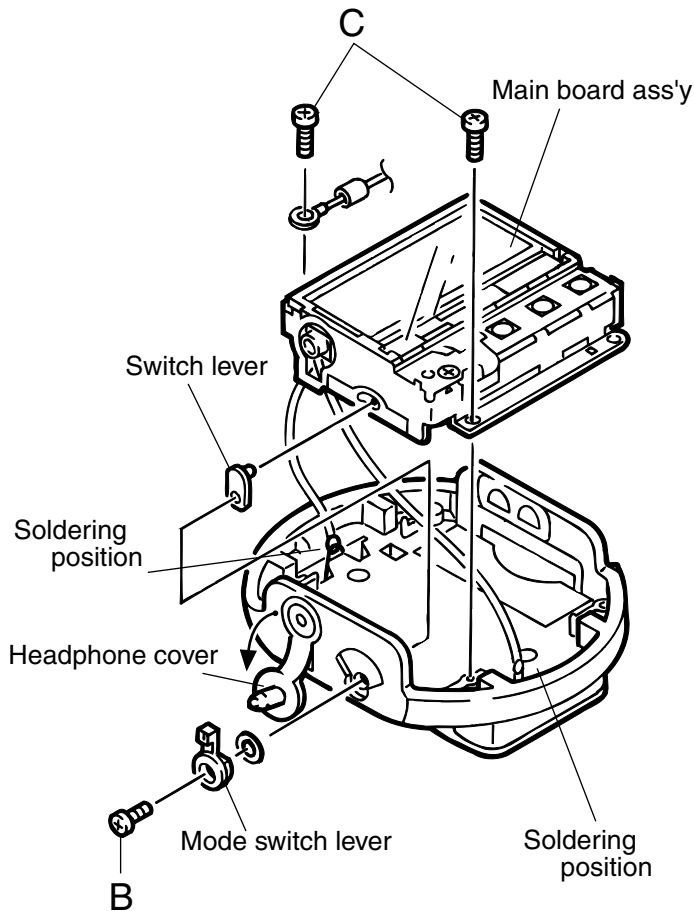


Fig. 4

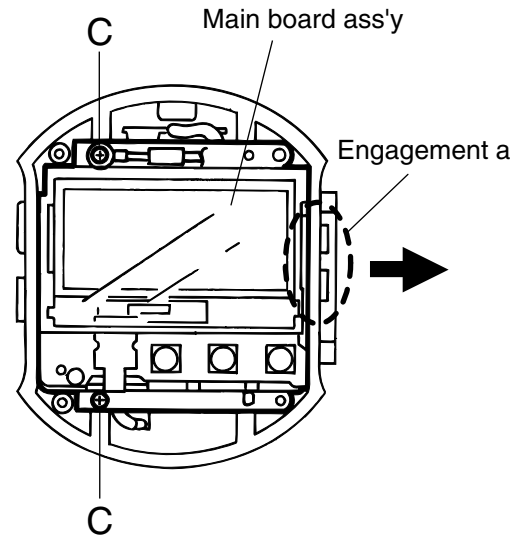


Fig. 3

■ Removing the main board ass'y
(Figs. 2 to 4)

• Remove the main board ass'y before proceeding to the following.

1. Remove two screws D retaining the side bracket from the right side of the main board ass'y.

Remove screw E retaining the LCD board from the top of the main board ass'y, and disconnect connector CN501 from the sub board by pulling the connector upward.

Expand two claws b on the holder outward and remove the holder from the LCD Board.

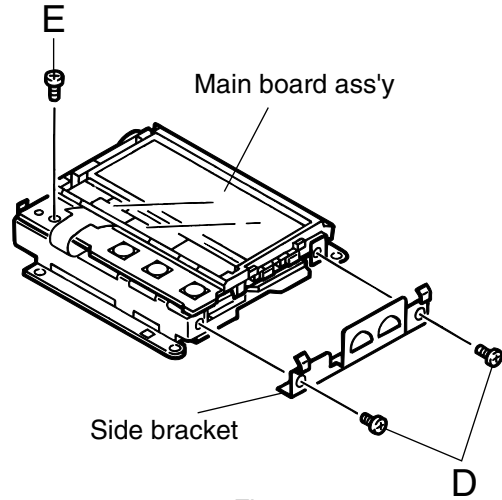


Fig. 5

■ Removing the main board ass'y
(Figs. 2 to 4)

• Remove the main board ass'y before proceeding to the following.

Remove the LCD board before proceeding to the following.

1. Remove screw F retaining the sub board from its bottom.

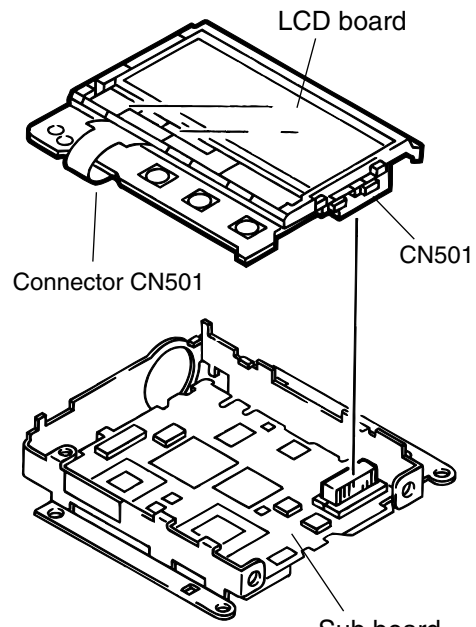


Fig. 6

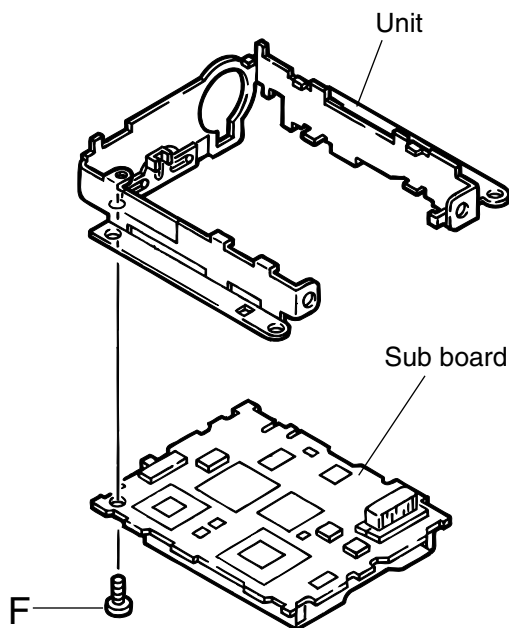


Fig. 8

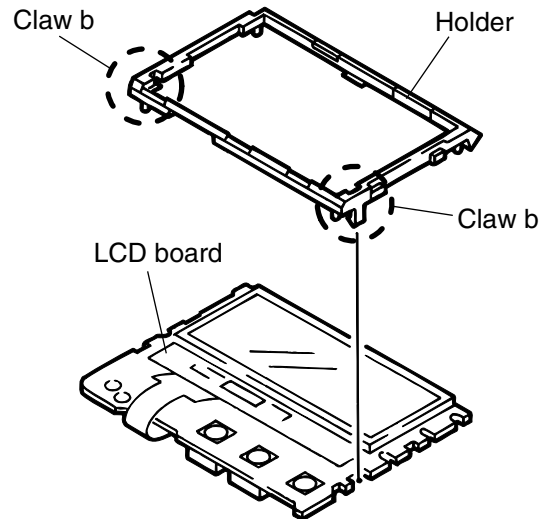


Fig. 7

Troubleshooting

■ What to prepare

- A PC that has the exclusive application software (JVC Media Manager V2) installed. Be sure to check for normal operation of the PC. If other application software is installed in the PC, be sure that this software does not affect the operation of the JVC Media Manager V2.
- When a user's product is taken in for service, be sure to obtain not only the player but also the user's SD card and USB reader/writer. Also, try to obtain as possible on the operational environment of the user's PC.
<PC's operational environment>
- Product name, model number, name of CPU, operation clock, RAM capacity, HD capacity, names of installed software, use of USB hub, and any equipment connected with USB simultaneously.

■ Checkpoints before servicing

- Is the write-protect switch on the SD card set to LOCK?
- Does the battery have enough capacity?

Be aware that manganese batteries do not have sufficient capacitor; their use can result in improper operation.

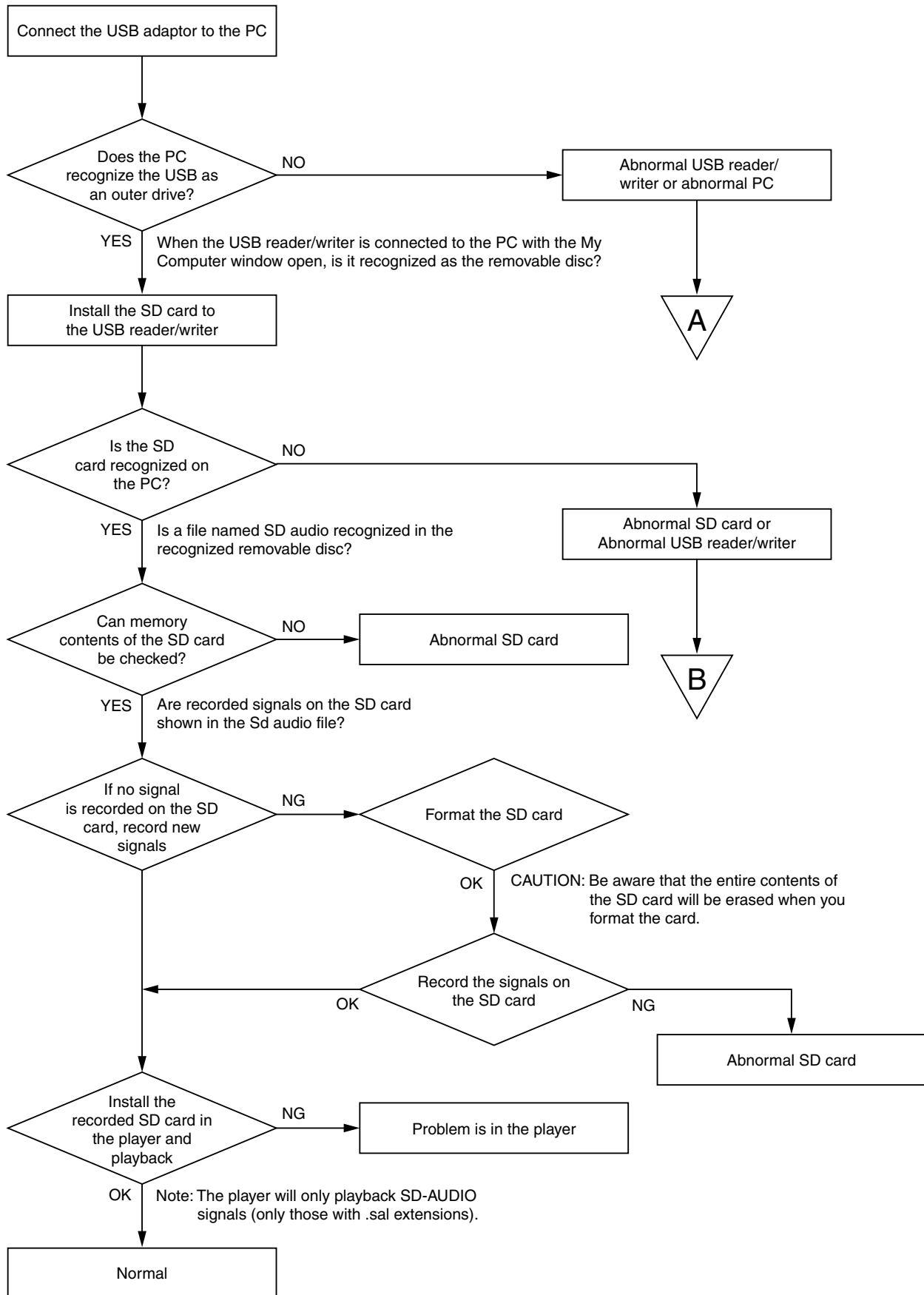
■ Precautions

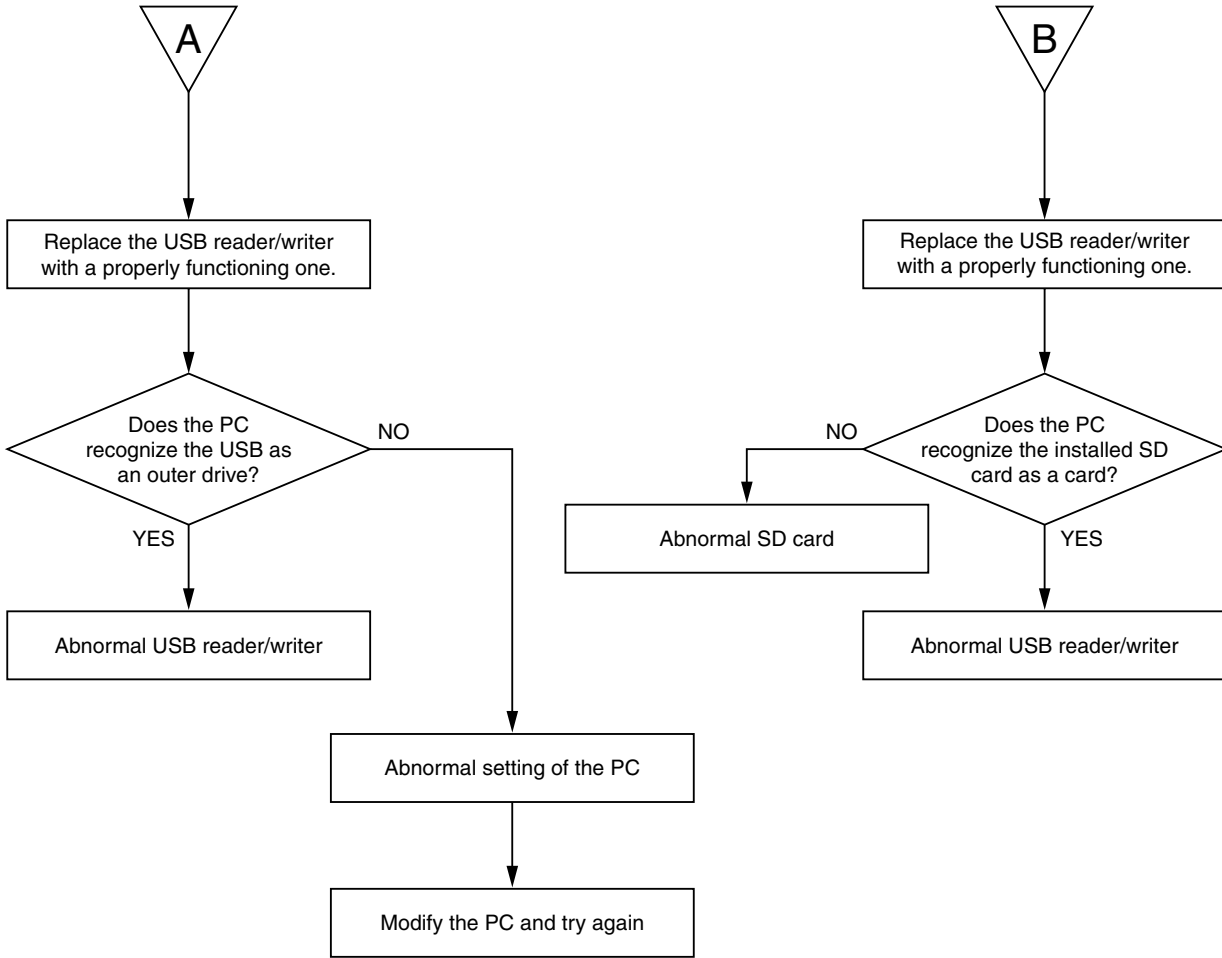
- A PC sometimes does not recognize the USB reader/writer depending on its conditions (such as competing with the installed software). Therefore, always keep the PC in good condition so that any adaptor can be connected properly.
- There is a possibility that not only the hardware but also software (PC's application software) may be the source of the problem. Therefore, be sure to inspect all potential sources carefully and thoroughly before specifying any causes.
- Check the connection part of the card to see whether it is dirty or has any foreign objects attached to it before specifying the cause of the problem.
- If the card is formatted, the written data (signals) will be erased and cannot be recovered
- When you format the card, be sure to format it with the format function of JVC Media Manager V2.

If the card is formatted with Windows or MS-DOS, the card will not operate with JVC Media Manager V2.

Flowchart

This is to determine whether the cause of the problem is in the IC recorder or in one of the accessories





■ Remarks:

When the PC does not recognize the USE reader/writer as a removable disc even then the USB reader/writer is connected to the PC, this is an indication of an abnormal USB reader/writer. To confirm this, and to improve the accuracy of your service diagnosis, however, it is recommended that you repeat the check procedure with a one. Properly functioning USB reader/writer.



VICTOR COMPANY OF JAPAN, LIMITED

AUDIO & COMMUNICATION BUSINESS DIVISION

PERSONAL & MOBILE NETWORK B.U. 10-1, 1Chome, Ohwatari-machi, maebashi-city, 371-8543, Japan